

Smart Seina RGB

91962


Technical data

Supply Voltage: 240V~, 50Hz


Output: 12V DC 5W Max. Constant voltage

Bulb Type: 3.5W LED module (SMD) RGB (included)

 Conformity with all relevant EC Directive requirements.

 The power supply is Double Insulated and does not require connection to an Earth circuit.

 Waste electrical products should not be disposed of with household waste. Please recycle where facilities exist. Check with your Local Authority or local store for recycling advice.

 This product is suitable for dimming.

 This product is rated at IP44

Care and Cleaning

We recommend cleaning with a soft dry cloth. Do not use solvents or abrasive cleaners as these could damage the finish.

In normal circumstances, stainless steel is very resistant to corrosion. It does however require maintenance to preserve the high quality appearance.

Wash the product with warm soapy water, removing all surface deposits.

Rinse with clean water and with a soft cloth, wipe dry.

With a soft cloth soaked with a protective oil, wipe all over.

In some cases, surface corrosion may arise after installation. This is normally caused by tiny iron particles left behind after the brushing process when finishing.

If the product is subject to extreme environmental conditions such as marine locations, industrial pollution and acid rain these maintenance procedures should be carried out around four times a year. For severe corrosion, non-abrasive cream cleaners or proprietary stainless steel cleaners should be used to remove the corrosion.

Diffuser - Wipe with a damp cloth. Do not use abrasive materials.

For your safety, always switch off the power supply before cleaning.

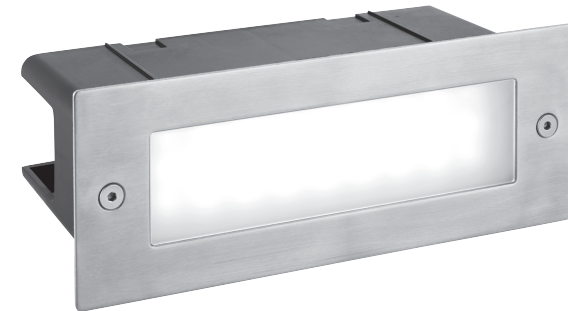
Do not clean the units with a pressure washer.

Safety information

For your safety, always switch off the power supply before maintaining the system.




The LED module is protected by a shade. This part must be replaced immediately should the shade become cracked or damaged. This fitting must not be used without the shade in place.



Thank you for purchasing this light fitting. Please read the instruction carefully before use to ensure safe and satisfactory operation of this product. Please retain these instruction for future reference.

Warning

 This power supply is Double Insulated and does not require connection to an Earth circuit.

The LED units are Safety Extra Low Voltage and must not be earthed.

Please read these instructions carefully before commencing any work.

This unit must be fitted by a competent and qualified electrician.

Check the pack and make sure you have all the parts listed.

Install in accordance with the IEE Wiring regulations and current Building Regulations.

This system operates at Safety Extra Low Voltage (12V), via an LED driver. Never connect the light fittings directly to the mains without using the supplied driver.

To prevent electrocution switch off at mains supply before installing or maintaining this fitting. Ensure other persons cannot restore the electrical supply without your knowledge. If you are in any doubt, please consult a qualified electrician.

This light fitting should be connected to a circuit with a 30mA RCD fitted.

If replacing an existing fitting, make a careful note of the connections.

This system contains non-replaceable parts and cannot be serviced. If damage occurs the part should be scrapped.

This bricklight product is specifically designed and tested for installation into vertical walls only. Under no circumstances should it be fitted into the ground or into horizontal surfaces.

This product is manufactured from marine grade stainless steel, making it suitable for application in coastal environments.

Waste electrical products should not be disposed of with household waste. Please recycle where facilities exist. Check with your local authority or retailer for recycling advice.

Layout

Plan the desired layout of these fittings carefully, ensuring the cables will reach the distances between the mains plug, the LED driver and each light fitting.

Avoid locating any cables in positions that would cause a hazard. Position cables and outdoor rated junction boxes (not supplied) away from areas where they may be at risk from being cut, trapped or damaged.

We recommend that you use H05RN-F specification cable (not supplied) which is an outdoor grade, rubber sheathed cable.

The mains supply cable must have a minimum cross sectional area of 1.0mm²

Cables must be protected using suitable conduit or plastic trunking.

Product must only be installed into vertical walls.

Installation

Existing fittings must be completely removed before installation of a new product. Before removing the existing fitting, carefully note the position of each set of wires.

Note that the switch is turned off before installation.

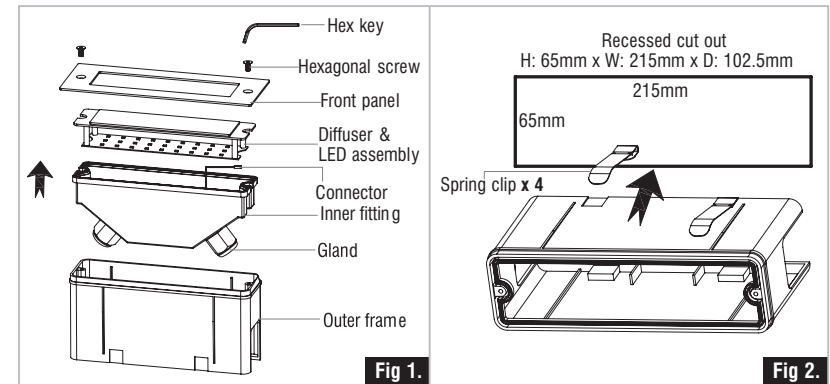
Ensure that the screws and cable entry points are sealed to maintain the IP rating of the product.

- Using the supplied hex key, remove the front panel by unscrewing the two hexagonal screws. Then disassemble the bricklight; remove the diffuser & LED assembly by disconnecting the 2-pin cable, and the inner fitting from the outer frame. See **Fig 1**.
- N.B. this product is supplied with a plain front panel. It cannot be interchanged with a louvered panel.
- Select a mounting location for the product and prepare a cut out size of H: 65mm x W: 215mm x D: 102.5mm. If removing an existing brick, the mortar should not be removed.
- Pass the incoming supply cable through the cut out and through the outer frame.
- Fit the 4 spring clips into the outer frame by pushing them into the slots. Ensure they are securely fitted and then securely fit the outer frame into the wall. See **Fig 2**.
- Wire as detailed **Wiring diagram**
- Tighten the cable gland to ensure waterproof seal.
- Assemble the bricklight, ensuring the front bezel is securely fitted to ensure the front bezel is securely fitted to ensure waterproof seal.
- Replace fuse or circuit breaker and switch on. Your light is now ready for use.

This product is suitable for dimming with 'SaxbySmart' app, Google Home or Amazon Alexa. Please refer to the 'SaxbySmart' manual for specific operations.

We recommend putting the wifi receiver within 20-25 meters of your WI-FI Hub. This will vary depending on the strength of your WI-FI coverage.

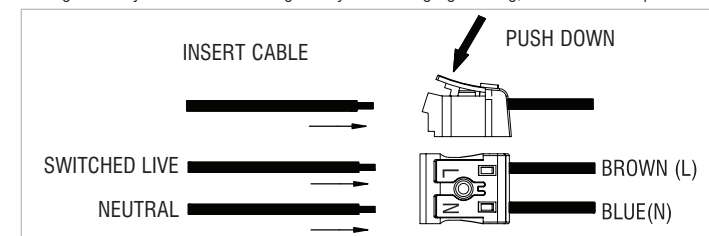
We recommend testing the position before full installation.



Wiring

This product is double insulated and must not be earthed. If there are any incoming earth cables, they must be joined together and well insulated with good quality insulation tape. This is to ensure earth continuity throughout your property.

Having correctly identified the wiring from your existing light fitting, connect to the quick fit connection block in the following way:



Check that...

- You have to correctly identified the wires.
- The connections are tight.
- No loose strands have been left out of the terminals.

Create scenes to suit your way of living or working

Educate or program your voice control device to suit you. Control multiple devices in a single room or building by creating scenes within the Saxby Smart app or through Amazon Alexa or Google Assistant.



Office lights come on, cool white & 80% brightness



Living room lights dim to 40% brightness



Lights dim as the mood changes for evening dinner

No HUB required or complex installations

Saxby Smart fittings come fully equipped with a built in chip that connects to your Wi-Fi router. Simply download the Saxby Smart app to your smartphone, register and add your lighting devices. You're good to go - create a personalised lighting experience.



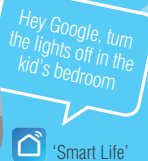
Install fitting



Register your account & add devices



Your Saxby Smart app is working



'Smart Life'

Connect to your Amazon Alexa or Google Assistant using 'Smart Life'

Hey Google, turn the lights off in the kid's bedroom



USER MANUAL

ENJOY YOUR SAXBY SMART LIGHT!

INTELLIGENT LIGHTING
saxbysmart



Adding a device

Download the 'Saxby Smart' app

- Please scan the QR code or search 'Saxby Smart' to download on your App Store or Google Play.



App Store



Google Play

Registration & log in

- Enter your email or mobile phone number to register.
- A verification code will be sent via email or text message, enter this when prompted.
- Set your password.

This Saxby Smart product will support 2.4G WIFI bands only

Connecting your devices

- Click 'Add device'.
- Turn you device on and leave for 10 seconds.
- Turn off and on repeatedly three times.
- Your light will start to blink, click 'Confirm light blink rapidly'.
- Enter your Wi-Fi details and click 'Confirm'.
- Rename your device and click 'Completed'.

Controlling your Saxby Smart fitting

- Click 'White mode' to adjust the colour temperature and brightness.
- Click 'Schedule' to set up a day to day planner for your lights.
- Click the triple dot icon at in the top right corner to create scenes.

Connecting to Amazon Alexa

- Open your Alexa app.
- Click Skills and Games.
- Search 'Smart Life' and click 'Enable to use'.
- Enter the same log in details used for your Saxby Smart app.
- Alexa will now discover and connect your devices.
- Your light is now set up. Try a voice command like 'Alexa, turn off the light'.



Connecting to Google Home

- Open your Google Home app.
- Click Home Control and the + button to add device.
- Search 'Smart Life'.
- Enter the same log in details used for your Saxby Smart app.
- Assign your light to a room.
- Your light is now set up. Try a voice command like 'Hey Google, turn off the light'.

